

## Injury attendances to Royal Oldham Hospital Emergency Department

### April 2010 to March 2011

This report summarises recorded injury attendances to Royal Oldham Hospital Emergency Department (ED) between April 2010 and March 2011.

Between April 2010 and March 2011 there were 30,659 injury attendances to Royal Oldham Hospital ED. Males accounted for over half (55%) of all attendances. The month with the highest attendances was March (n=2,914) with December (n=2,247) having the lowest attendances for injury (**Figure 1**). The majority (67%) of attendances were recorded as other injury. Of the specified injury groups, falls (17%) accounted for the highest proportion followed by road traffic collisions (RTC) (7%) (**Table 1**).

For all injuries the highest proportions of attendances were for persons aged 5 to 19 (27%) and 20 to 34 years (23%) (**Figure 2**). Two-fifths of fall attendees (40%) were aged 65 or over (**Figure 3**).

**Table 2** shows the location of the incident of injury attendances. Nearly a half (46%) of injuries occurred in the home. Over three-quarters (76%) of deliberate self-harm (DSH) injuries and over half (56%) of falls occurred in the home.

**Table 3** shows the ethnicity of injury attendees to Royal Oldham Hospital ED. Three-quarters (75%) were white, 8% were Pakistani and 5% were Bangladeshi.

The disposal of a patient can give an indication of the severity of the injuries sustained. Over six in ten (61%) of attendees were discharged, over a quarter (27%) were referred and 10% were admitted (**Table 4**). Over four-fifths (81%) of RTC attendees were discharged. Over one in ten (14%) of DSH attendees and over half (53%) of burn/scald attendees had a referral/follow-up (**Table 5**).

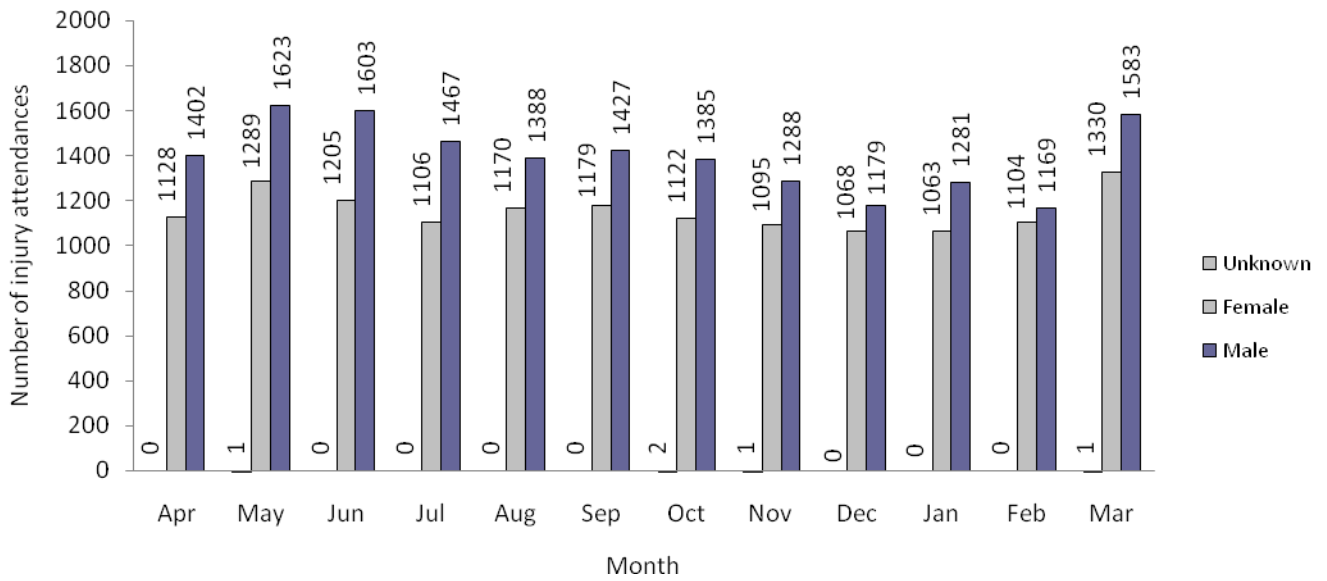
**Table 6** shows the arrival methods of injury attendances at Royal Oldham Hospital ED. Nearly three-quarters (71%) arrived by private transport and over one in six (18%) arrived by ambulance.

**Table 7** presents data for assault attendances to Royal Oldham ED. Nearly three-quarters (73%) were male, nearly a half (46%) occurred in a public place, nearly a half (47%) of attendees were aged 20 to 34 years, and over a third (36%) of assaults occurred on weekend nights.

**Figure 4 (a-d)** shows crude rates of attendance at Royal Oldham Hospital ED by attendee's area of residence, in this case Middle Super Output Area (MSOA). The MSOAs with the highest crude rates are indicated beneath each figure.<sup>1</sup>

<sup>1</sup> Population figures are drawn from mid-2008 population estimates from the Office for National Statistics.

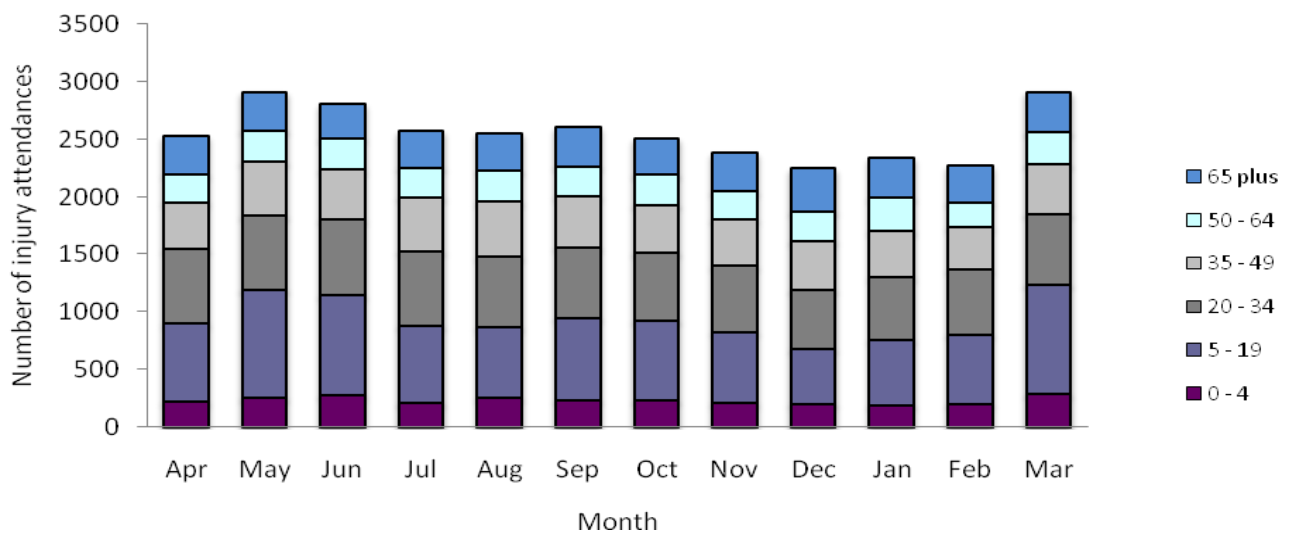
**Figure 1: Royal Oldham Hospital ED: Total injury attendances by gender and month, April 2010 to March 2011**



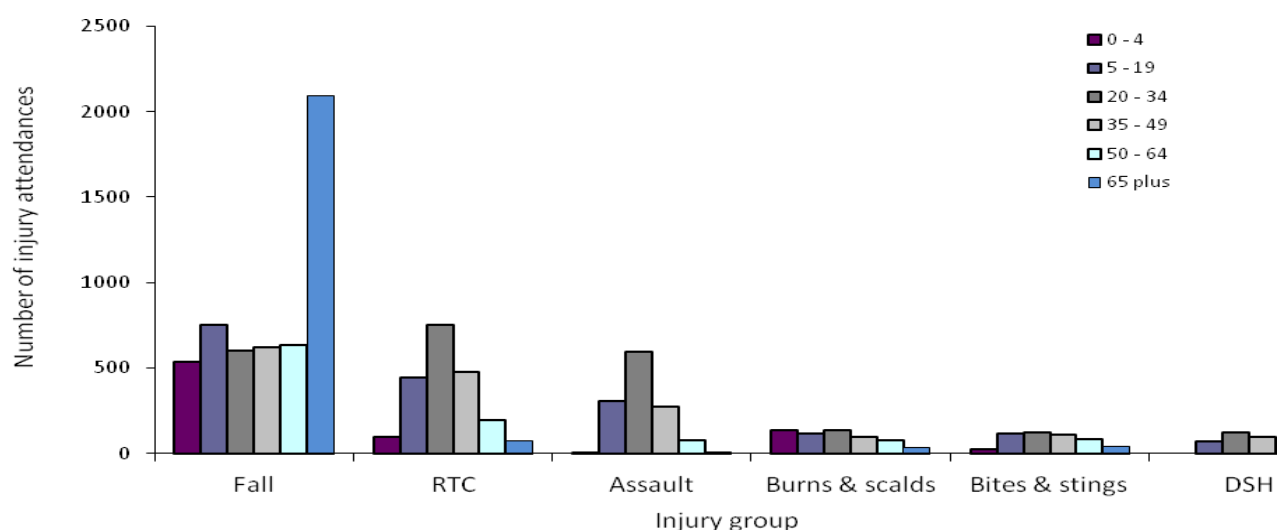
**Table 1: Royal Oldham Hospital ED: Total injury attendances by injury group and month, April 2010 to March 2011**

Injury group	Apr	May	Jun	Jul	Aug	Sep	Oct	Nov	Dec	Jan	Feb	Mar	Total	%
<b>Other injury</b>	1799	2041	2019	1791	1784	1782	1635	1552	1388	1445	1480	1929	20645	67
<b>Fall</b>	385	444	369	378	392	429	440	401	511	480	448	564	5241	17
<b>RTC</b>	141	161	190	164	181	158	210	197	147	182	133	177	2041	7
<b>Assault</b>	108	139	110	110	75	90	116	105	101	111	106	107	1278	4
<b>Burns &amp; scalds</b>	39	56	56	53	57	66	39	61	40	59	37	48	611	2
<b>Bites &amp; stings</b>	37	48	48	63	45	53	44	32	32	31	31	45	509	2
<b>DSH</b>	21	24	16	14	24	28	25	36	28	36	38	44	334	1
<b>Total</b>	2530	2913	2808	2573	2558	2606	2509	2384	2247	2344	2273	2914	30659	100

**Figure 2: Royal Oldham Hospital ED: Total injury attendances by age group and month, April 2010 to March 2011**



**Figure 3: Royal Oldham Hospital ED: Total injury attendances by age group and injury group, April 2010 to March 2011**



**Table 2: Royal Oldham Hospital ED: Total injury attendances by location of incident and injury group, April 2010 to March 2011<sup>2\*</sup>**

Location	Assault		Bites & stings		Burns & scalds		DSH		Fall		Other injury		RTC		Total	
	n	%	n	%	n	%	n	%	n	%	n	%	n	%	n	%
Home	302	24	223	44	334	55	254	76	2927	56	9905	48	83	4	14028	46
Other	318	25	112	22	42	7	45	13	321	6	4113	20	1859	91	6810	22
Public place	581	45	130	26	14	2	25	7	1092	21	3191	15	69	3	5102	17
Work	32	3	32	6	75	12	***	***	144	3	1565	8	***	***	1857	6
Educational establishment	21	2	5	1	6	1	***	***	169	3	1595	8	***	***	1798	6
Unknown	24	2	7	1	140	23	9	3	588	11	276	1	20	1	1064	3
<b>Total</b>	<b>1278</b>	<b>100</b>	<b>509</b>	<b>100</b>	<b>611</b>	<b>100</b>	<b>334</b>	<b>100</b>	<b>5241</b>	<b>100</b>	<b>20645</b>	<b>100</b>	<b>2041</b>	<b>100</b>	<b>30659</b>	<b>100</b>

\*Percentages may not add up to 100 due to rounding.

**Table 3: Royal Oldham Hospital ED: Total injury attendances by ethnicity and month, April 2010 to March 2011<sup>3</sup>**

Ethnicity	Apr	May	Jun	Jul	Aug	Sep	Oct	Nov	Dec	Jan	Feb	Mar	Total	%
White	1903	2150	2042	1911	1924	2025	1896	1774	1705	1803	1725	2144	23002	75
Not stated	232	307	275	249	244	194	225	197	180	167	171	287	2728	9
Pakistani	197	232	260	206	212	204	202	211	190	194	192	250	2550	8
Bangladeshi	124	148	145	128	97	118	113	124	111	110	113	151	1482	5
Any other ethnic group	13	22	19	22	25	25	26	14	14	14	19	20	233	1
Mixed	21	14	21	19	15	8	17	16	12	13	20	23	199	1
Black	17	18	11	15	22	15	14	18	13	22	10	14	189	1
Asian other	11	***	14	6	10	12	6	13	***	6	8	13	107	0
Indian	7	11	16	12	***	***	6	9	9	7	10	7	101	0
Unknown	***	5	***	***	***	***	***	***	5	***	***	***	39	0
Chinese	***	***	***	***	***	***	***	***	***	5	***	***	29	0
<b>Total</b>	<b>2530</b>	<b>2913</b>	<b>2808</b>	<b>2573</b>	<b>2558</b>	<b>2606</b>	<b>2509</b>	<b>2384</b>	<b>2247</b>	<b>2344</b>	<b>2273</b>	<b>2914</b>	<b>30659</b>	<b>100</b>

<sup>2</sup> Please note that all numbers less than five have been suppressed in line with patient confidentiality and if there is only one number <5 in a category then two numbers will be suppressed at the next level.

<sup>3</sup> White = Irish, British, other white background; Mixed = white and black, white and Asian, mixed any other; Other = any other ethnic group, any other Asian background; Black = African, Caribbean, other black.

**Table 4: Royal Oldham Hospital ED: Total injury attendances by method of disposal and month, April 2010 to March 2011<sup>4</sup>**

Disposal	Apr	May	Jun	Jul	Aug	Sep	Oct	Nov	Dec	Jan	Feb	Mar	Total	%
Discharged	1535	1803	1717	1565	1424	1583	1573	1535	1342	1440	1401	1777	18695	61
Referral/ follow-up	710	799	817	729	831	692	656	586	596	582	587	828	8413	27
Admitted	234	252	227	240	263	288	233	224	244	276	244	261	2986	10
Other	51	59	47	39	40	43	47	39	65	46	41	48	565	2
<b>Total</b>	<b>2530</b>	<b>2913</b>	<b>2808</b>	<b>2573</b>	<b>2558</b>	<b>2606</b>	<b>2509</b>	<b>2384</b>	<b>2247</b>	<b>2344</b>	<b>2273</b>	<b>2914</b>	<b>30659</b>	<b>100</b>

**Table 5: Royal Oldham Hospital ED: Total injury attendances by method of disposal and injury group, April 2010 to March 2011\***

Disposal	Assault		Bites & stings		Burns & scalds		DSH		Fall		Other injury		RTC		Total	
	n	%	n	%	n	%	n	%	n	%	n	%	n	%	n	%
Admitted	236	18	***	***	***	***	68	20	1399	27	1096	5	132	6	2986	10
Referral/follow-up	276	22	180	35	326	53	46	14	1222	23	6186	30	177	9	8413	27
Discharged	583	46	302	59	231	38	162	49	2451	47	13303	64	1663	81	18695	61
Other	183	14	***	***	***	***	58	17	169	3	60	0	69	3	565	2
<b>Total</b>	<b>1278</b>	<b>100</b>	<b>509</b>	<b>100</b>	<b>611</b>	<b>100</b>	<b>334</b>	<b>100</b>	<b>5241</b>	<b>100</b>	<b>20645</b>	<b>100</b>	<b>2041</b>	<b>100</b>	<b>30659</b>	<b>100</b>

\*Percentages may not add up to 100 due to rounding

**Table 6: Royal Oldham Hospital ED: Total injury attendances by mode of arrival and month, April 2010 to March 2011\***

Mode	Apr	May	Jun	Jul	Aug	Sep	Oct	Nov	Dec	Jan	Feb	Mar	Total	%
Private transport	1826	2143	2057	1877	1822	1856	1768	1621	1509	1560	1568	2079	21686	71
Ambulance	416	462	437	397	448	462	478	488	490	506	486	540	5610	18
Taxi	111	117	110	108	96	90	83	73	101	108	74	127	1198	4
Not stated	51	51	64	53	50	78	76	77	34	62	41	41	678	2
Public transport	42	52	52	53	43	41	42	35	30	22	37	38	487	2
Foot	33	42	51	48	64	35	20	39	27	40	26	55	480	2
Work transport	25	19	11	16	13	23	17	20	22	18	12	18	214	1
Police	18	14	18	9	18	13	16	25	25	18	23	12	209	1
Other	***	11	5	8	***	5	***	5	7	8	6	***	68	0
Unknown	***	***	***	***	***	***	5	***	***	***	***	***	27	0
Helicopter	***	***	***	***	***	***	***	***	***	***	***	***	2	0
<b>Total</b>	<b>2530</b>	<b>2913</b>	<b>2808</b>	<b>2573</b>	<b>2558</b>	<b>2606</b>	<b>2509</b>	<b>2384</b>	<b>2247</b>	<b>2344</b>	<b>2273</b>	<b>2914</b>	<b>30659</b>	<b>100</b>

\*Percentages may not add up to 100 due to rounding

<sup>4</sup> Admitted=admitted to ED bed/became a lodged patient of the same health care provider; Discharged=discharged - did not require any follow up treatment; Referral/follow-up=discharged - follow up treatment to be provided by GP, referred to ED clinic, referred to fracture clinic, referred to other out-patient clinic, transferred to other health care provider, referred to other health care professional; Other=died in department, left department before being treated, left department having refused treatment, other.

**Table 7: Royal Oldham Hospital ED: Total assault and all injury attendances by gender, incident location, age group and day/time of attendance, April 2010 to March 2011\***

Injury type	Assault attendees		All injuries % (n=30,659)
<b>Gender</b>			
Female	343	27	45
Male	935	73	55
<b>Location</b>			
Public place	581	46	17
Home	302	24	46
Other	318	25	22
Work	32	3	6
Educational establishment	21	2	6
Not recorded	24	2	3
<b>Age group</b>			
0 - 4	5	0	9
5 - 19	305	24	27
20 - 34	598	47	23
35 - 49	276	22	17
50 - 64	81	6	10
65 plus	13	1	13
<b>Day &amp; time</b>			
Weekend nights**	458	36	8
Weekend days	261	20	22
Weekdays	559	44	70

\*Percentages may not add up to 100 due to rounding

\*\*8pm to 4am, Friday night/Saturday morning; Saturday night/Sunday morning; Sunday night/Monday morning.

Author: Ian Warren, published May 2011

For further information please contact: Centre for Public Health, Research Directorate, Liverpool John Moores University, 2<sup>nd</sup> Floor, Henry Cotton Building, 15-21 Webster Street, Liverpool, L3 2ET.

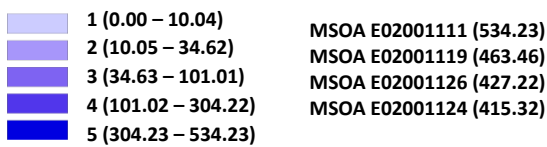
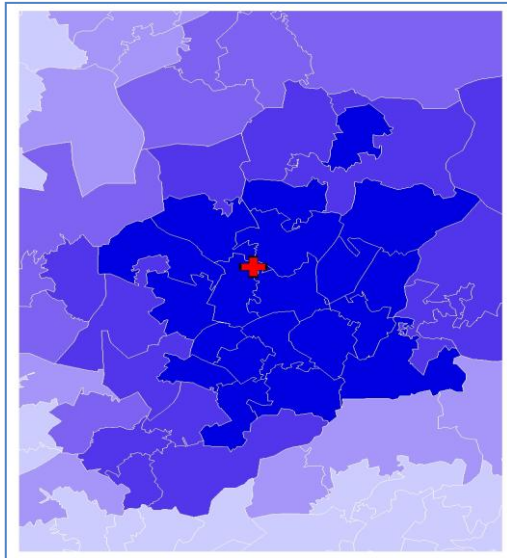
Tel: 0151 231 4513 or Email: [i.j.warren@ljmu.ac.uk](mailto:i.j.warren@ljmu.ac.uk)

Website: [www.tiig.info](http://www.tiig.info) (data requests should be made through the website)

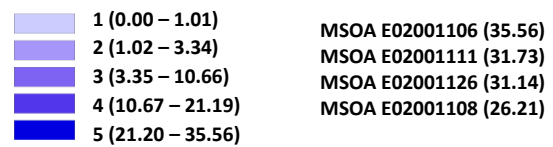
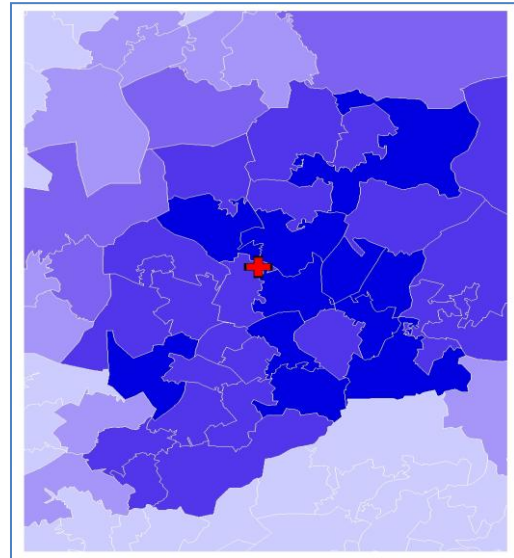
**Figure 4a,b,c,d: Middle Super Output Area of residence for injury attendances to Royal Oldham Hospital ED. Quintiles of crude rates per 1,000 population, April 2010 to March 2011**

a) All injury attendances: quintiles of crude rates per 1,000 population    b) Fall: quintiles of crude rates per 1,000 population

**+** Royal Oldham Hospital ED

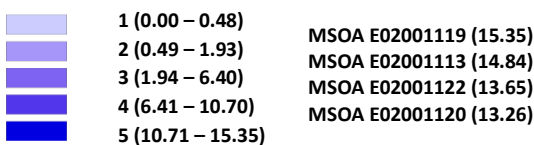
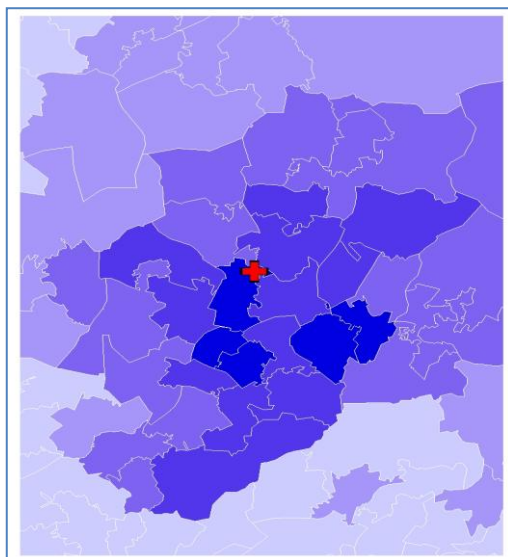


**+** Royal Oldham Hospital ED



c) RTC: quintiles of crude rates per 1,000 population

**+** Royal Oldham Hospital ED



d) Assault: quintiles of crude rates per 1,000 population

**+** Royal Oldham Hospital ED

